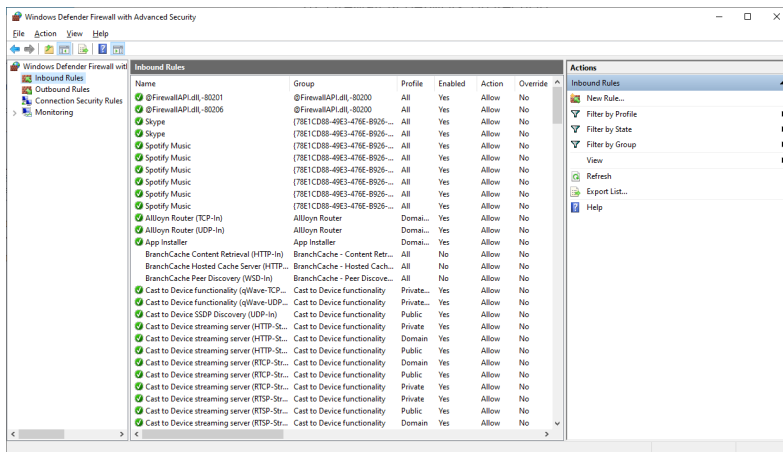


Procedure for installing the NorthInvent SNMP driver:

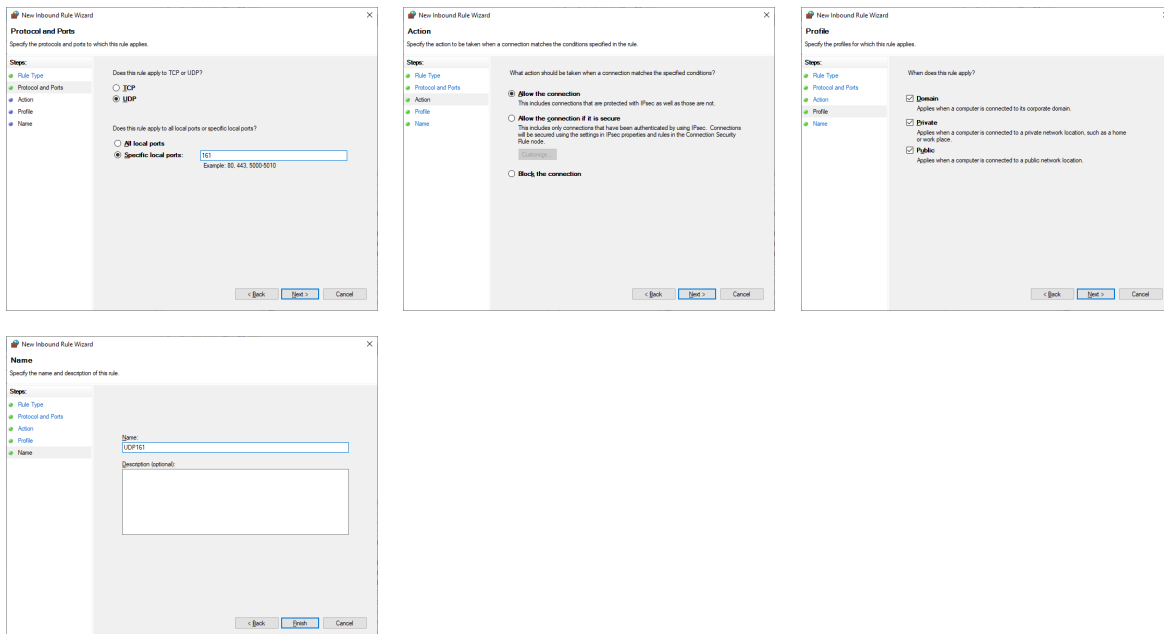
Microsoft .Net Core 3.1 is required to run the NorthSNMP driver. Make sure it is installed or install from this link: <https://dotnet.microsoft.com/download/dotnet-core/thank-you/runtime-desktop-3.1.6-windows-x64-installer>

Open windows firewall on UDP port 161:

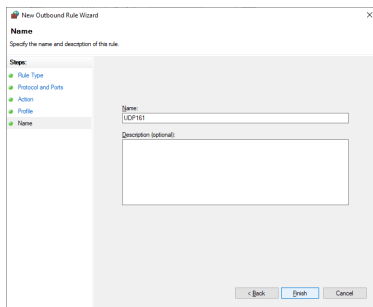
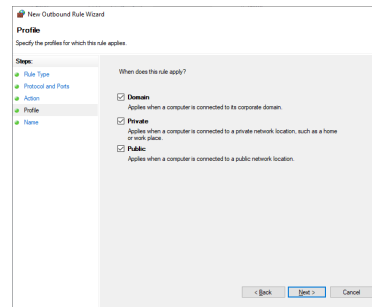
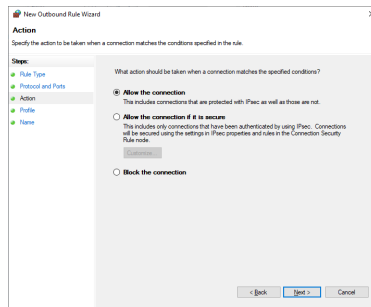
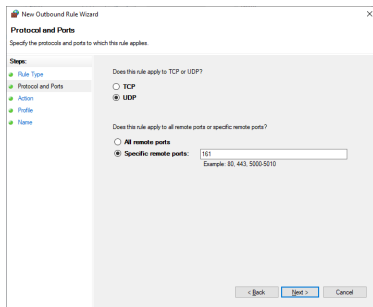
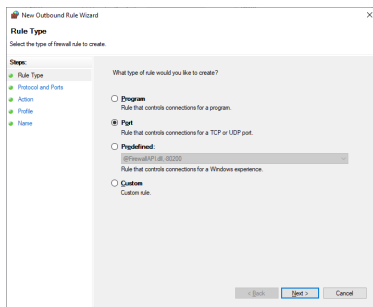
1. Press Windows key and type wf.msc to open the firewall control panel



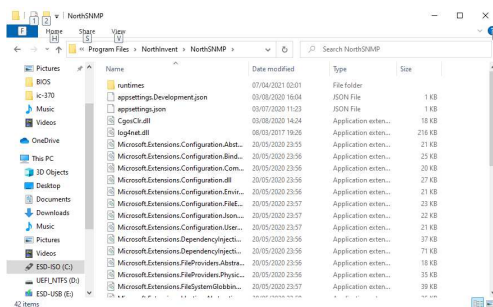
2. Select "Inbound rules" and click "add rule".



3. Select "Outbound rules" and click "add rule".



4. Create folder "c:\program files\NorthInvent\NorthSNMP" and copy files from NorthSNMP.zip to the folder.



5. Run the install.bat to install the service.

